

Lightroom Classic: Settings Develop Default [version 2.1]

Must have LR 9.2; PS21.0; ACR 12.2 or later

1. **Define** “Develop Default” Settings...

Select a photo from your Lightroom Classic catalog.

a. In the Develop Module click "**Reset**" All Settings"

o *Notice your Develop Settings - they should be zero. (if not, apply “Adobe Defaults” in “Defaults” group.)*

b. Enter the settings you want as your camera’s “Develop Defaults”

Basic

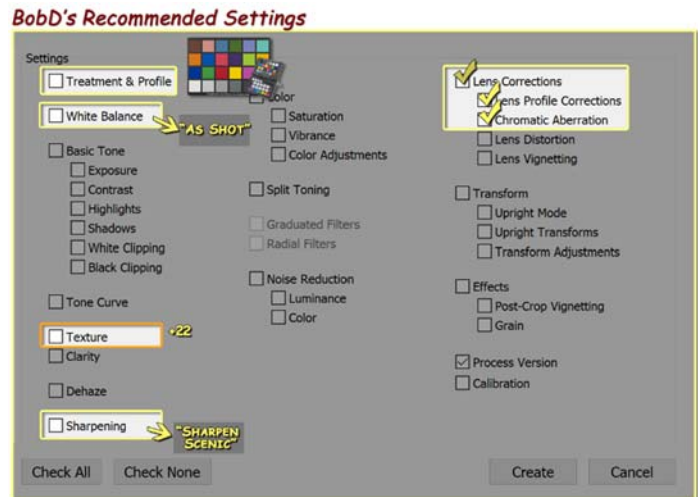
- Profile: Adobe Color
(Camera-Specific if available)*
- White Balance: As Shot
- Tone: “All Zeros”
- Presence: Texture 11, ...these will evolve

Detail

- Sharpening: “Medium” or “Scenic” Preset
My settings: Amount= 66; Radius: 1.0; Detail=50

Lens Corrections:

- ✓ (Check All)



=====

2. **Create Preset** with your camera’s “Develop Default” Settings...

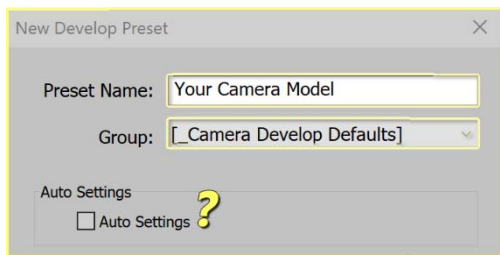
a. In the “Presets” panel, click the “+” symbol and name the Preset with Camera Model (e.g. Lumix G9)

Note: The 1st time I suggest you create a new preset “Group”, [**_Camera Develop Defaults**]... you will then use this “Group” to store all your camera presets

b. Click “Check All”

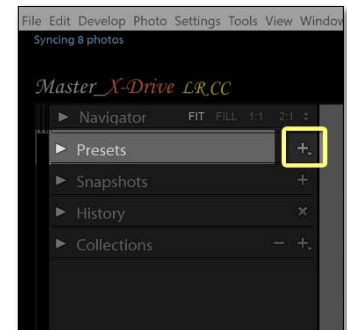
Note: Understand that “All” selects not only the values we entered, BUT ...all the “null” values we didn’t!

- Check “Auto Settings” box? (Yes?/No?)



[YES] I recommend “YES”, because Adobe’s camera raw “Auto” optimizes the “Basic” panel’s captured data.

[NO] If you bracket your exposures, “Auto” could make all brackets the same brightness..



...Let’s assign these “Develop Settings” to this specific camera.

Lightroom Classic: Settings Develop Default [version 2.1]

3. **Assign Preset (Develop Defaults) to a Specific Camera...** (by camera model and serial number)

a. Open LR's "Preferences" (PC/Mac) and select the "Presets" tab [Inset #1]

• In the "Raw Default" "Global" section: [Inset #2 (below)]

○ pull down and select "Camera Settings"

▪ check "Override master settings for specific cameras"

○ in the "Camera" section:

▪ You can select your camera from a list or... **just wait!**

...**Lightroom will auto detect your camera**

▪ *If you have 2 cameras of the same model, check "Show serial numbers"*

○ in the "Default" section:

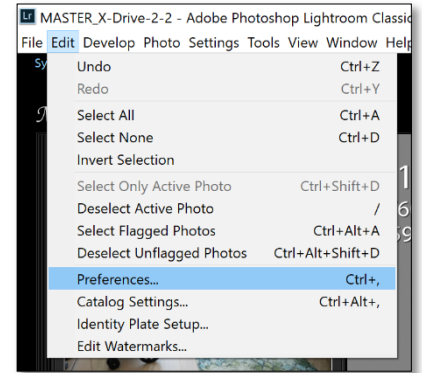
▪ pull down and select to "Preset": [Inset #3 (below)]

...*this will pull down a list of all your "Presets"*

▪ Select the preset group [**Camera Develop Defaults**] ...we created in step 2.

▪ then, Select the camera-specific preset we created

▪ Click "Create (or Update) Default" then "OK" to exit "Preferences"



[Inset #1]

[Inset #1]

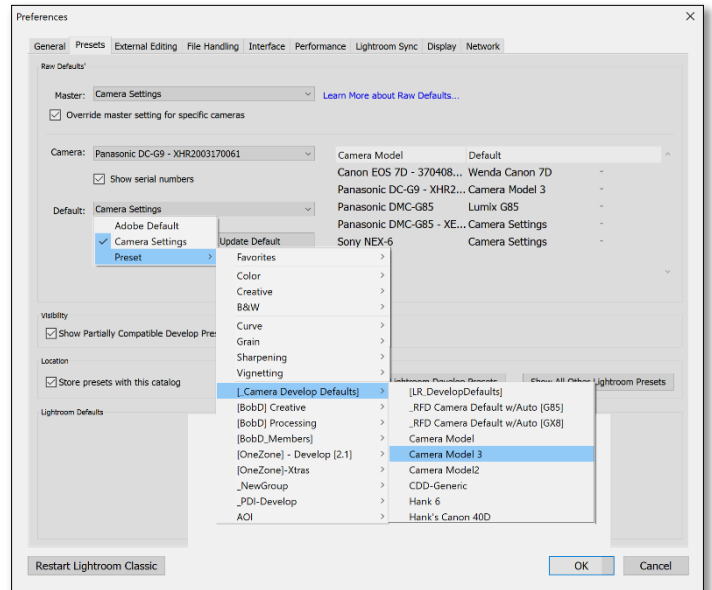
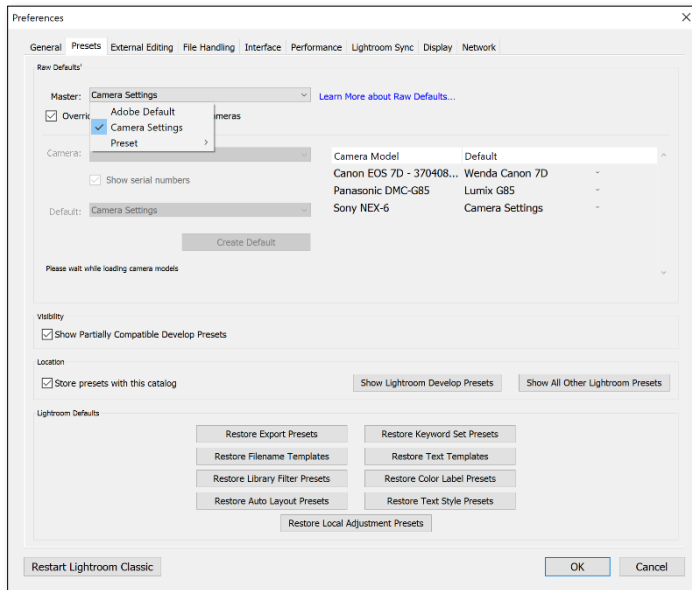
By doing this, Lightroom will identify the camera that took the photo. Even if you use the same camera card in different cameras, Lightroom will assign the proper *Develop Defaults* by camera when "Importing"!

Note:

- *Clicking the develop module's "Reset button to any photo taken with this camera prior to creating the defaults will update the values to these Camera-Specific Defaults!*
- *Gray slider values indicate default settings... moving a slider off the default value brightens the numbers!*

[Inset 2]

[Inset #3]



Lightroom Classic: Settings Develop Default

4. Update Your “Develop Defaults as they evolve”

As you become more familiar with your camera and software, your Develop Defaults will evolve: ...more “Sharpening”; less “Texture”; adding a “Camera Specific Color Profile”; etc..

- Pick a photo from the specific camera and hit “Reset”. *(This resets photo to the current defaults)*
- Now, apply desired changes *in this example: “Auto”*
 - hover-over the “Develop Default” preset and “right-mouse-click”, then select “Update with Current Settings”, this will display all Develop Preset choices.
 - Select “Check All” and, *(optional, check the “Auto Setting” box)* then select “Update”
Now, as before, when you Click the “Reset” button with a photo from this camera, the new “Camera Specific” Default values will be set..



5. Create a “Camera-Specific Profile” using the X-Rite ColorChecker

X-Rites ColorChecker has a plug-in for Lightroom. Follow the instructions to create a “camera-specific profile”. This profile can be applied by LR to become part of your Camera-Specific Develop Defaults This profile compensate for the color bias of you camera’s sensor.

An Overview to Create, and Add, a Dual “Illuminant” Camera-Specific Profile” To Your Preset

1. Photograph the ColorChecker under both **Daylight** and **Tungsten** light.*

*Note: Exposing the ColorChecker is important. If your exposure is too bright, you may have trouble creating a profile.

- Once the profile is created, pick a photo from that specific camera.
- **Add** the X-rite “Camera-Specific-Profile” to your “Develop Default” preset.
 - “Reset” your defaults... *(This resets your current defaults settings.)*
 - In the “Basic” panel, change the “Profile” to the newly created “Camera-Specific Profile”.
 - In the Preset Panel, hover-over the “Camera Develop Default” preset; “right-mouse-click” and select “Update with Current Settings”, this will display all Develop Preset choices.
 - Select “Check All” and “Update”. *Note: If you want “Auto Settings” you will have to re-check that box*

